



# Barr Host Communications Suite

HIGH-SPEED FILE TRANSFER AND SPOOLING FOR HOST SYSTEMS  
SUCH AS MAINFRAMES, UNIX, AS/400S AND WINDOWS SYSTEMS

*You can't beat the  
cost and performance*

## Barr Host Communications Suite (BHCS)

BHCS is a Windows-based Print Spooler with input and output modules designed to receive data from multiple sources and then distribute the data to multiple destinations. Using BHCS can help automate and control print across the organization.

BHCS can be customized to connect to IBM Mainframes, AS/400's, TCP/IP HOSTs and network applications. Various modules can be added to BHCS to split data, transform it from one printer language to another, and even send the data to high-speed production printers. It will help move print jobs (print, internal reports, invoices, etc.) from any HOST to any printer in the organization, including Xerox EPS printers, and even send to applications such as Document Management Systems, online portals, etc.

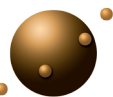
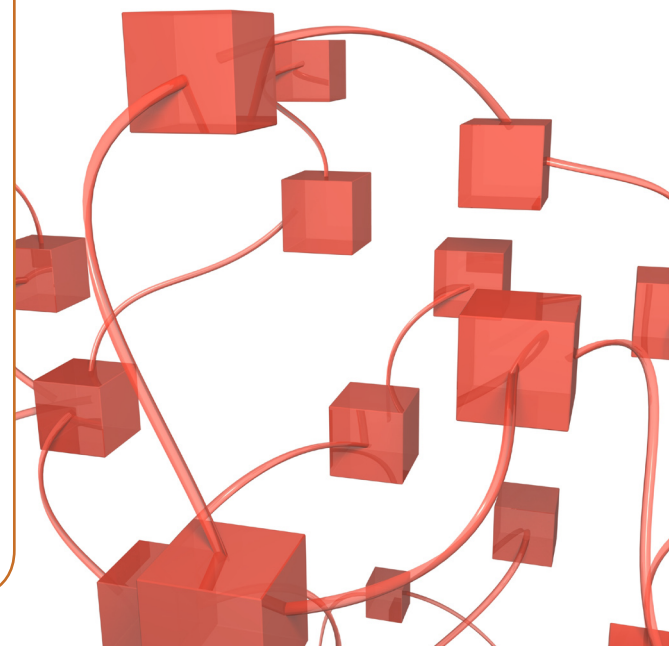
### KEY FEATURES

- **Includes** print queue management features such as restart, file view, etc
- **Runs** unattended with auto-logout and auto-restart
- **Manages and stores** host resources (FCB, UCS) and forms overlays (EBCDIC or ASCII files)
- **Provides** built-in communications scope and status line for monitoring and diagnostics
- **Install** on virtual machines or Cloud Servers, runs 32 or 64 bit
- **Supports** multiple, simultaneous connections
- **Print** PCL, Postscript Xerox, as well as other PDLs
- **Transform** file formats to take advantage of your printers
- **Pass** information about a file to a script to allow for FTP, email, etc.
- **Workflow Customization** print workflow can be controlled by use of the BHCS Override Table

### SYSTEM REQUIREMENTS

- **Hardware Requirements:**
  - 3.0 GHz single core processor or a multi-core processor
  - 2 gigabytes (GB) of RAM
  - 100 GB hard drive
- **Software Requirements:**
  - Operating System: Windows 7, Windows 10, Windows Server 2008, or Windows Server 2012 (32-bit or 64-bit)

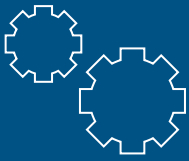
*Barr Host  
Communications Suite  
can be installed on  
virtual machines or  
Cloud Servers.*



**BARR SYSTEMS**

352.491.3100 • 800.227.7797 • 800.barr.sys • 352.491.3141 (fax) • barrsystems.com

**help** printsolutions



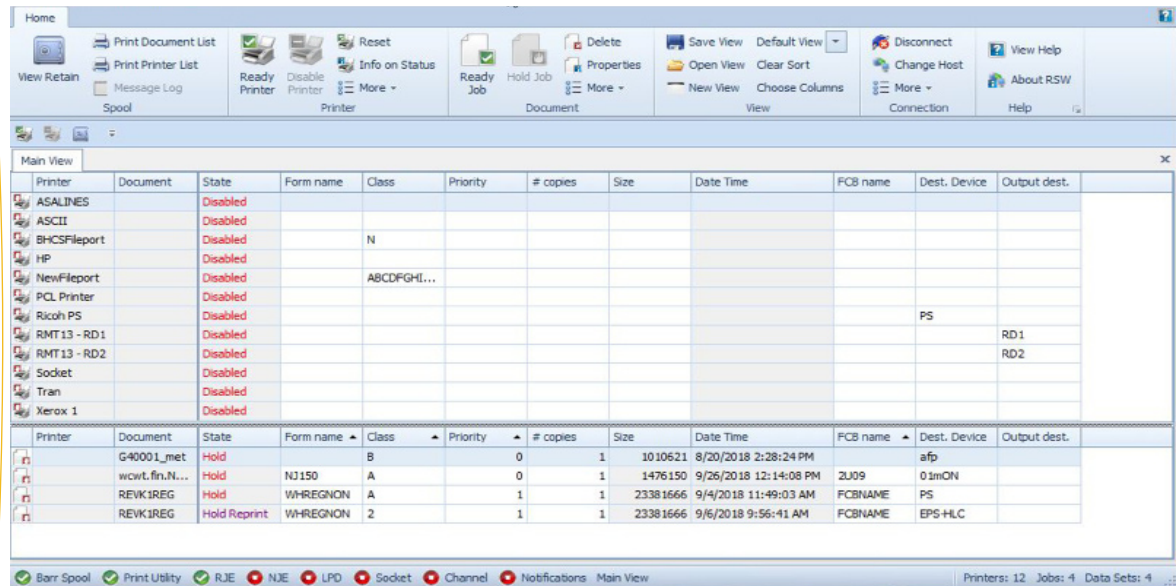
## REMOTE SPOOL WINDOW (RSW) OVERVIEW

The Remote Spool Window (RSW) is a new modern spool window available for the Barr Host Communications Suite (BHCS). Although it can run on the same computer as BHCS, it is designed to run on a different computer and communicate with BHCS remotely.

### Remote Spool Window (RSW) Features

• The RSW allows you to manage and view spool and retained documents. A user can switch between a spool view and a retain view. These views provide a subset of the BHCS features, based on assigned user rights:

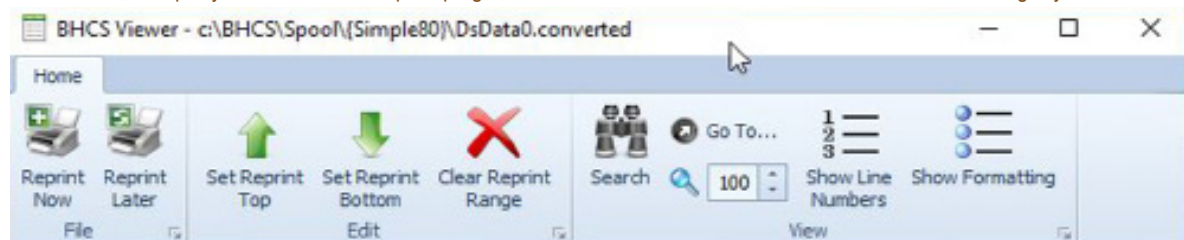
- Ribbon Pane Menu - Include Spool, Printer, Document, View, and Connection commands.
- Input Status Toolbar - Provides easy viewing of the status of each BHCS input.
- Printer List - Displays printer attributes and features custom column configuration.
- Document List - Displays document attributes with numerous right-click document actions.



### Remote Spool Window (RSW) Viewer Features

• The viewer utility displays when you choose a document to view (in RSW), and then select the view option. A user can quickly access commands via the ribbon pane menu:

- File - The option to reprint now or reprint later.
- Edit - The option to set reprint starting point, stopping point, or clear the reprint range.
- View - The option to search the specified text, or go to a specific page. To zoom in or out, display line numbers per page, or show marks and other hidden formatting symbols.

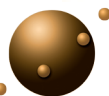


SIMPLE PRINTER TEST

This Simple Printer Test is followed by a trouble-shooting section. Please see this section if problems occur with your printer test.



**Barr Systems, LLC**  
 6241 NW 23 Street  
 Gainesville, FL 32653  
 352.491.3100 ph  
 800.barr.sys tf  
 352.491.3141 fax  
 barrsystems.com



**BARR SYSTEMS**