



Barr EOM (Paperless)

Increase efficiency by adding email and web delivery to your existing print destinations.

Barr EOM (Paperless)

Your organization might be spending tens of thousands of dollars a day on a system that slows down the delivery of critical information. Barr EOM (Paperless) cuts the costs of producing, delivering, and storing paper documents.

Barr EOM provides all the oversight and control needed for small to large organizations with built-in support for your existing Print processes. Without changing the applications that generate your documents, Barr EOM makes information easier to distribute, store, manage, access and share.

KEY FEATURES

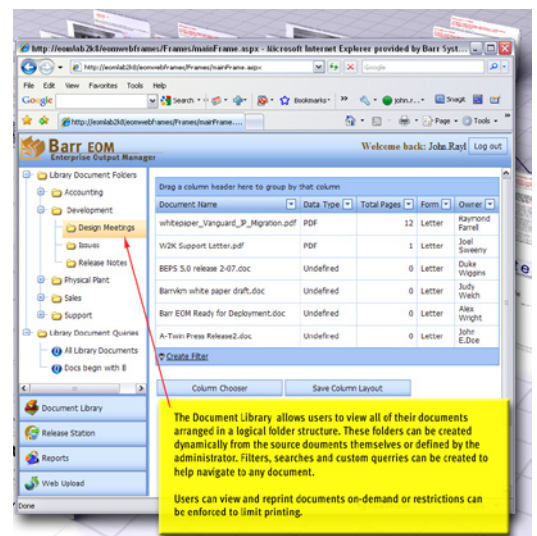
Integrate printing and online delivery into a single solution – Many times, organizations want to both print a document and present it online. Multiple Destination Routing within Barr EOM greatly simplifies this process. Most often a document is designated to go to just one destination. At times it is desirable to simultaneously send a document to two or more destinations. Examples include printing while also emailing a document, or printing a document while also routing it for conversion to PDF in preparation for archiving. Using the Business Rules Manager, administrators can configure a rule to force incoming jobs to be routed to multiple destinations, including printers, email, archive systems, web presentment, etc with just one workflow.

Capture print jobs and reports from any system - We've been connecting systems to our spool management products for years; and with Barr EOM we've streamlined and enhanced the process. No matter where your information originates, with Barr EOM connecting to your systems and receiving information occurs seamlessly, thanks to the product's many input options. Regardless of your sources, Barr EOM receives all available document properties, which can then be used to determine the respective document's workflow through the system.

- Email
- Network Folders
- Windows Print Queues
- LPD/LPR
- FTP
- 3211 Printer Emulation
- IP Sockets
- Remote Job Entry (RJE)
- Network Job Entry (NJE)
- MQ Series



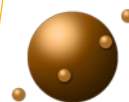
Costs associated with printed documents go well beyond paper, ink, and printers.





We Understand

Barr Systems has developed software that manages the flow of documents and the costs associated with them since 1979. We innovate solutions that span across large scale high-volume production output, distributed multi-function devices, and desktop printing.



BARR SYSTEMS
IIOMATION

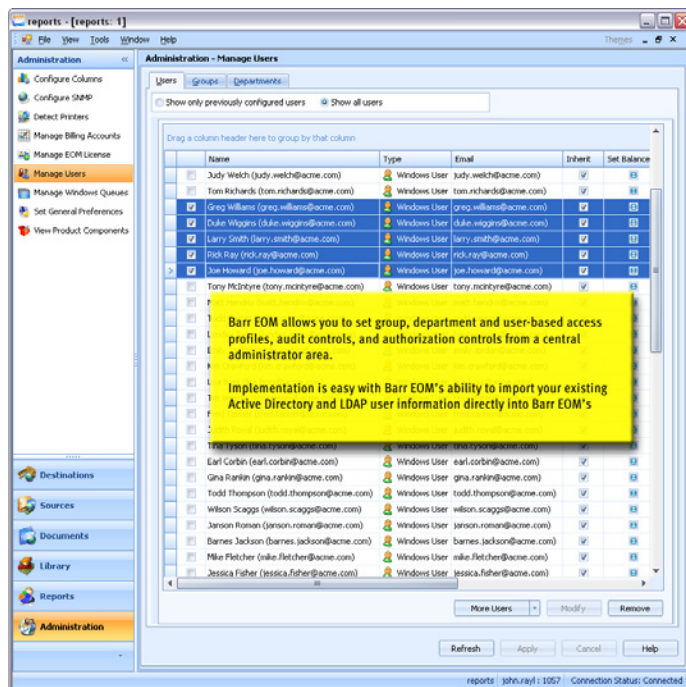
4500 NW 27 Ave
Gainesville, FL 32606
352.491.3100 ph
800.barr.sys tf
352.491.3141 fax
barrsystems.com

Transform and modify your print jobs without programming - Documents generated by drivers and applications come in a variety of print formats such as AFP, PCL, PostScript, Metacode/LCDS. These formats are not conducive to email and online distribution. In addition to converting these formats, Barr EOM can also –

- Split documents according to predefined criteria.
- Merge multiple dissimilar documents or print jobs into a single file.
- Filter-out individual pages according to predefined criteria (e.g. payment slips).

Alerts and Notifications - Barr EOM monitors all sources, documents, document management activities, and destinations real-time. Barr EOM offers a wide array of notification options such as e-mail, text message, or pop-up notification on your desktop. For example, administrators can choose to be notified if errors occur while documents are being received, converted, or routed. They can be informed if problems arise with any printer. End users can also receive status about the documents they submit or are responsible for.

Simplified and strong security - Once documents reach Barr EOM, they are kept secure with features such as group- and user-based access profiles, audit controls, and authorization controls to monitor and enforce the viewing privileges of each file. Barr EOM integrates with Microsoft's Active Directory, as well as other LDAP servers and can directly reference and use your existing network user and group configurations.



helpprintsolutions
www.helpprintsolutions.com

Office Print • Production Print • Distributed Print